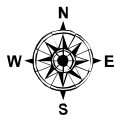
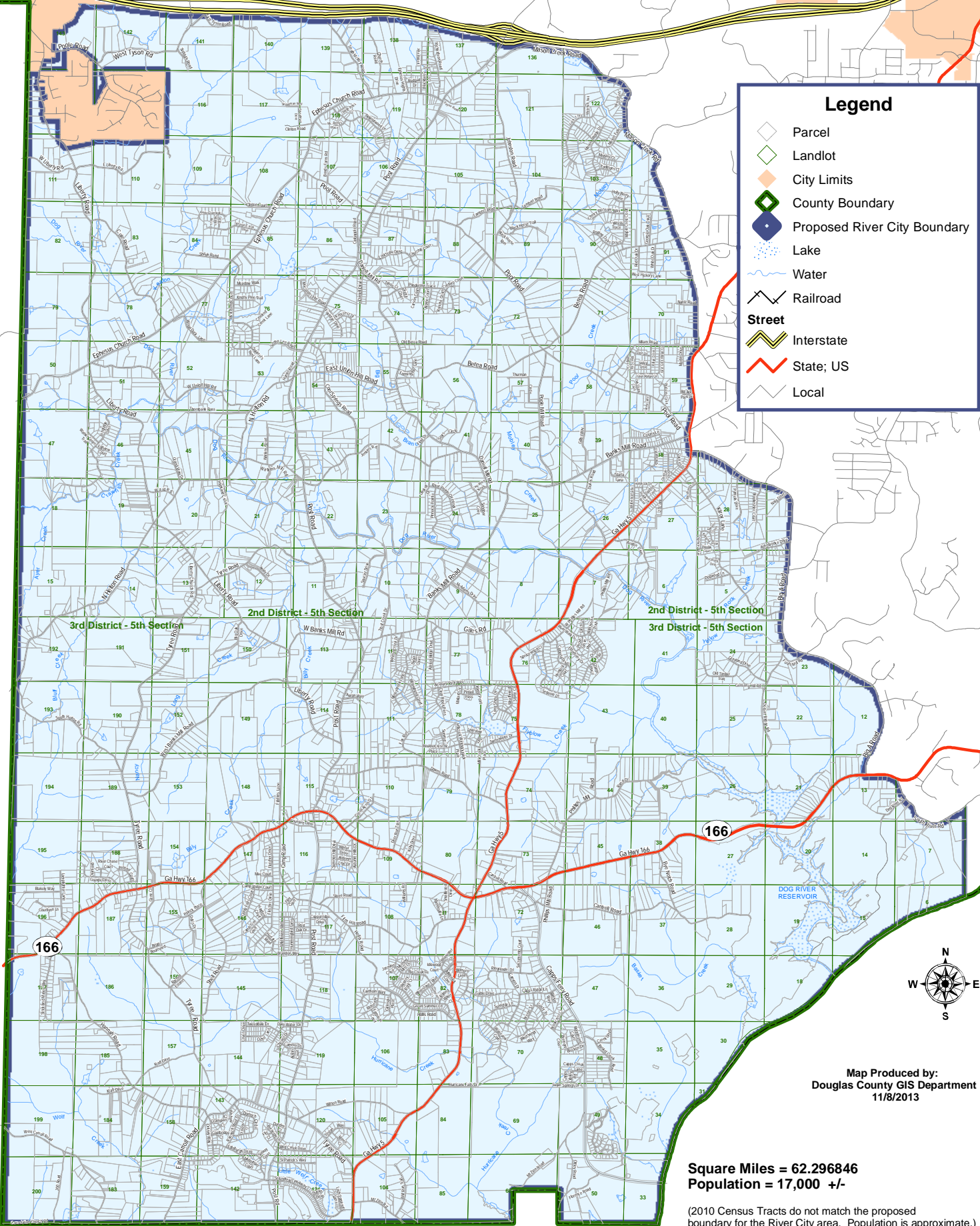


# PROPOSED RIVER CITY INCORPORATION

### Legend

- Parcel
- Landlot
- City Limits
- County Boundary
- Proposed River City Boundary
- Lake
- Water
- Railroad
- Street**
- Interstate
- State; US
- Local



Map Produced by:  
Douglas County GIS Department  
11/8/2013

**Square Miles = 62.296846**  
**Population = 17,000 +/-**

(2010 Census Tracts do not match the proposed boundary for the River City area. Population is approximate.)

